

## ▼ Understanding the New Wireless Connection Speed Setting

In Elluminate *Live!* V9.6, you may have noticed the new Wireless Connection Speed setting when joining a session or in the Preferences Panel under Tools > Preferences . . . > or Session > Connection.

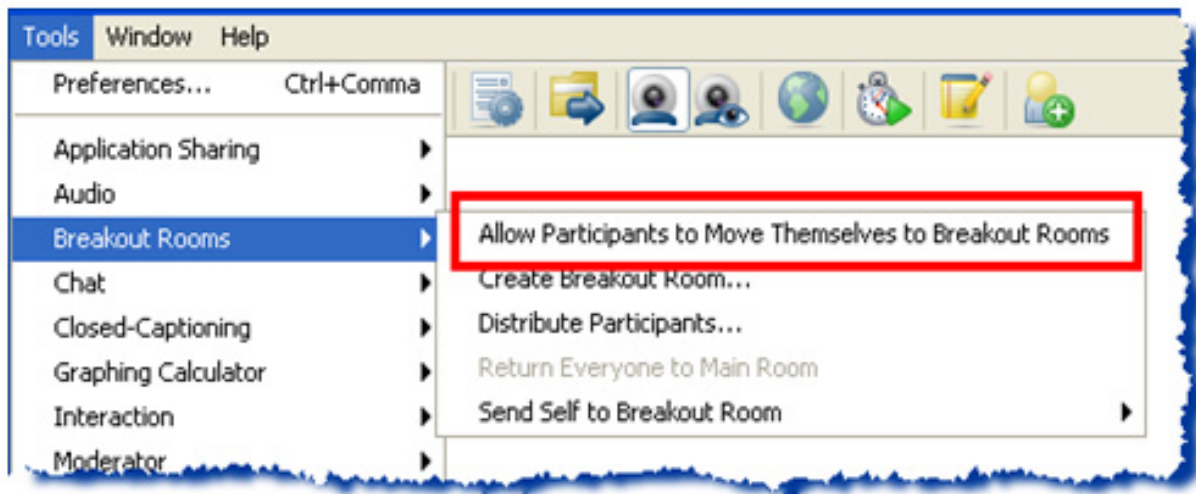
If you are using an aircard, cellular wireless service, or shared wireless services like those at airports and coffee shops, you are only getting a TINY portion of that network. Therefore, you need to lower your connection speed to improve your Elluminate *Live!* experience.

With the new Wireless setting, you may have to experiment between the ISDN and Cable/DSL settings to see which one works best for you. For more information, visit our [self-help portal](#).

## ▼ Allowing Participants to Move Themselves to Breakout Rooms

Collaboration in Breakout Rooms has Never Been Easier!

If you want participants to be able to move freely between rooms, you can grant them permission to do so by selecting Tools > Breakout Rooms > Allow Participants to Move Themselves to Breakout Rooms.



Enabling this feature will give participants more autonomy, allowing them to more easily participate in engaging activities, such as:

- Virtual learning stations
- Scavenger hunts
- Group work
- Round robin tournaments
- Think, pair and share

. . . and many more!