



Web Tour


Quick Reference Guide for Moderators

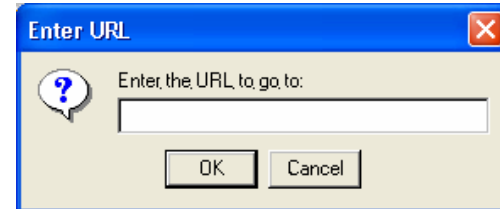
Web Tour allows moderators to take participants to a series of websites via an embedded browser window within the Elluminate *Live!* interface. Web Tour allows participants to interact independently with content in the window and allows moderators to redirect participants to any link.

Web Tour is a great way of taking users through a website (a synchronized Web surf) and then allowing them to interact on their own. For example, you can use Web Tour to take attendees to a website and then have them individually research a topic or complete a survey.

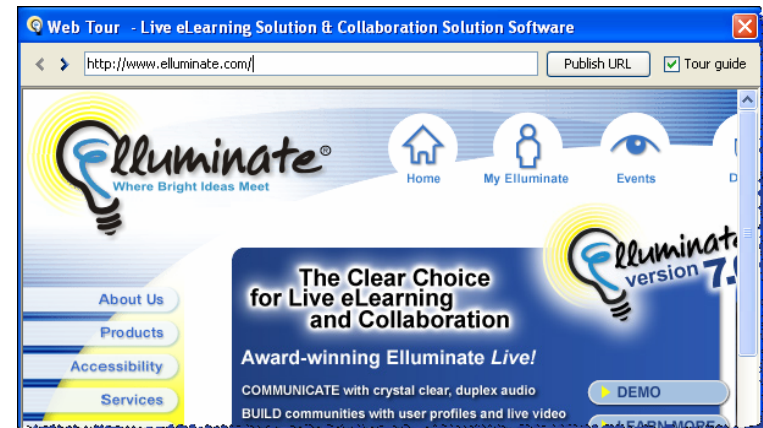
Using Web Tour

To use the Web Tour feature, users should have either Internet Explorer, Safari or Firefox as their default Web browser and have Java Web Start Version 1.4 or higher. If you do not have these defaults the website will open up outside of the Elluminate *Live!* interface and in the participant's default web browser – a Web Push.


1. Click on the “Go to URL” button on your main toolbar  or from the Tools menu, select Web Tour and then “Start a Web Tour...”
2. Enter the URL that you wish to tour and click OK.



3. A Web Tour window will open for each participant in the session. As the moderator navigates to different pages or to other websites, the participants will follow. If there are multiple moderators in the session, the “Tour Guide” checkbox allows one moderator to be the guide. Participants also have the ability to self-navigate in the window, but will be re-directed every time the tour guide makes a change.



Within the Web Tour window, you can:

- Move within the Web site by clicking on the various links.
- Move within the website by using the page arrows.
- Move to another web site by entering the URL in the URL text box.
- Click the **Publish URL** button to publish the URL to the Chat window.
- To close the Web Tour window, click on  or click the Web Tour window's Close button.

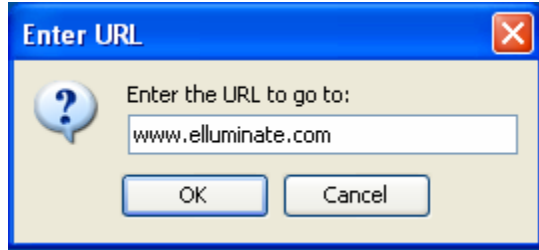
Using Web Push

Web Push is designed to open a website on each participant's computer in a browser window which is not embedded into Elluminate. This will give each participant the opportunity to bookmark or save the website address.

1. From the Tools menu, select Web Tour and then "Go to URL"



2. Enter the URL that you wish to tour and click OK.



3. The website will open in the participant's browser on top of Elluminate. Participants will then be able to self-navigate throughout the website. They will also be able to bookmark or save the website.

Best Practices

- Send pre-configuration information to participants to ensure that they have Java Web Start Version 1.4 (this version is available from <http://www.illuminate.com/support>) and that their default browser is either Internet Explorer, Safari or Firefox. Users with other browsers will still be able to view the website, but it will be launched outside of Elluminate Live!
- For websites that require users to log in, ensure that everyone has a username/password. Alternatively, you can use Application Sharing to allow participants to see your view of the website.
- When using Web Push, ask participants to use the emoticons or polling checkmark to indicate they have saved the pushed website and are ready to continue.
- List the website URLs that you plan to use during your session in a text document. Copy and paste the appropriate URL from this document.